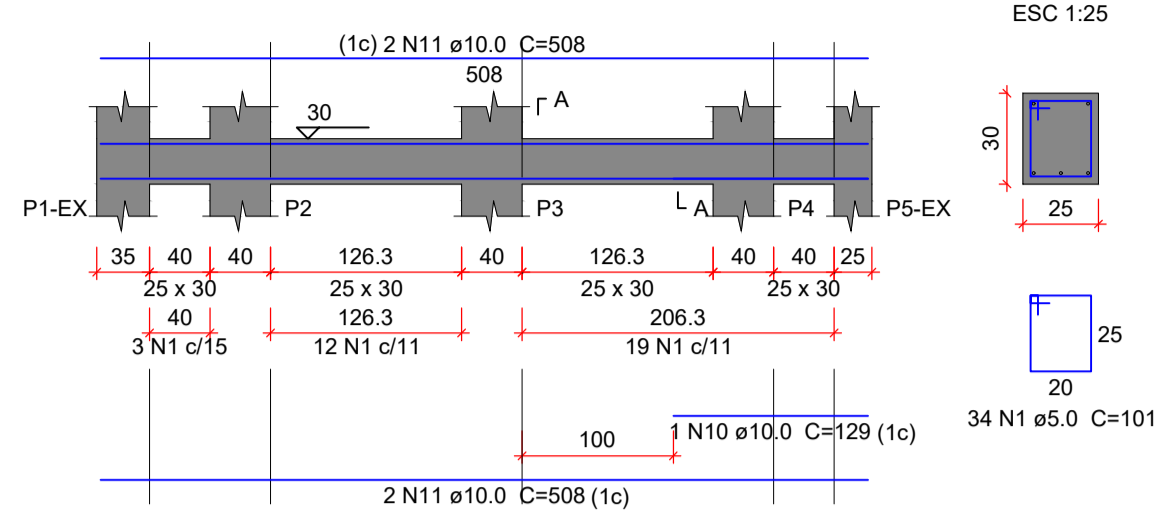
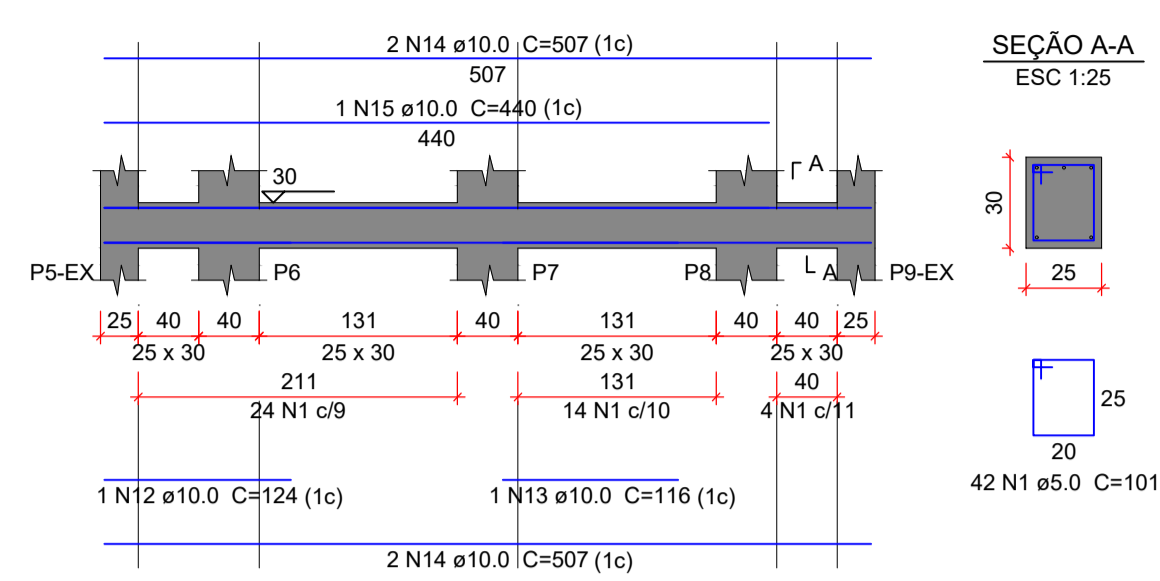


ARMAÇÃO VIGAS BALDRAME - GARAGEM (NÍVEL +30)

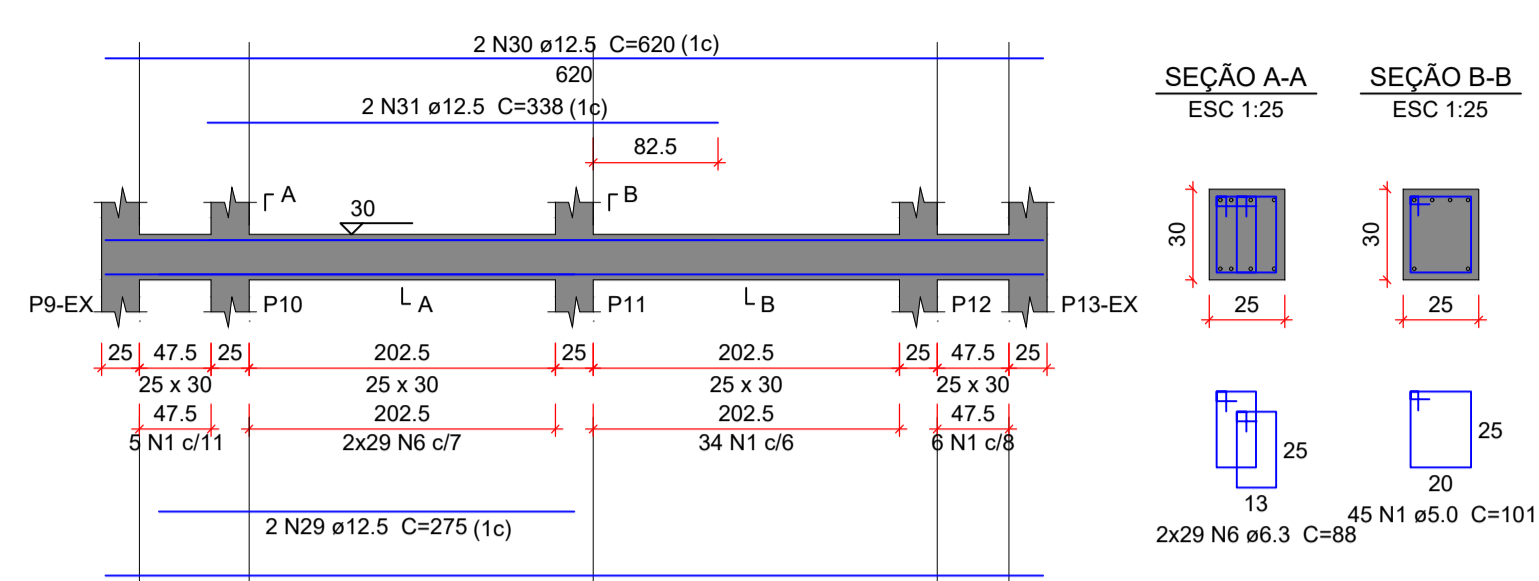
VB1
ESC 1:50



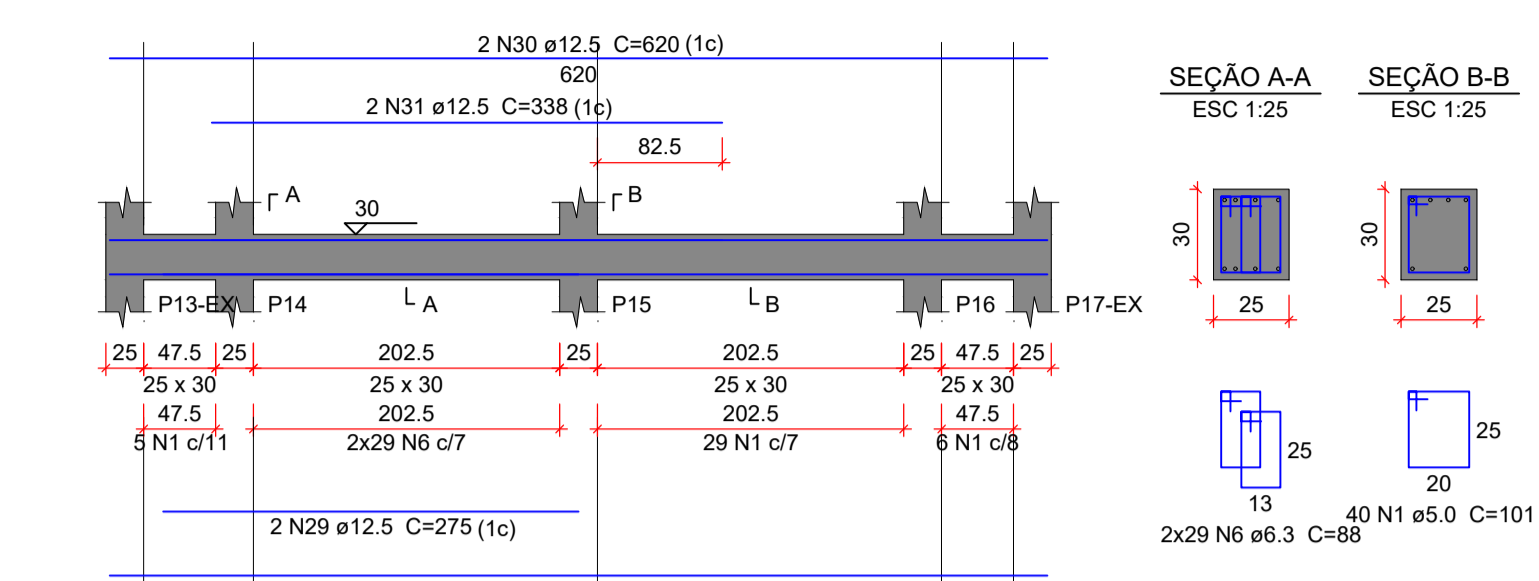
VB2
ESC 1:50



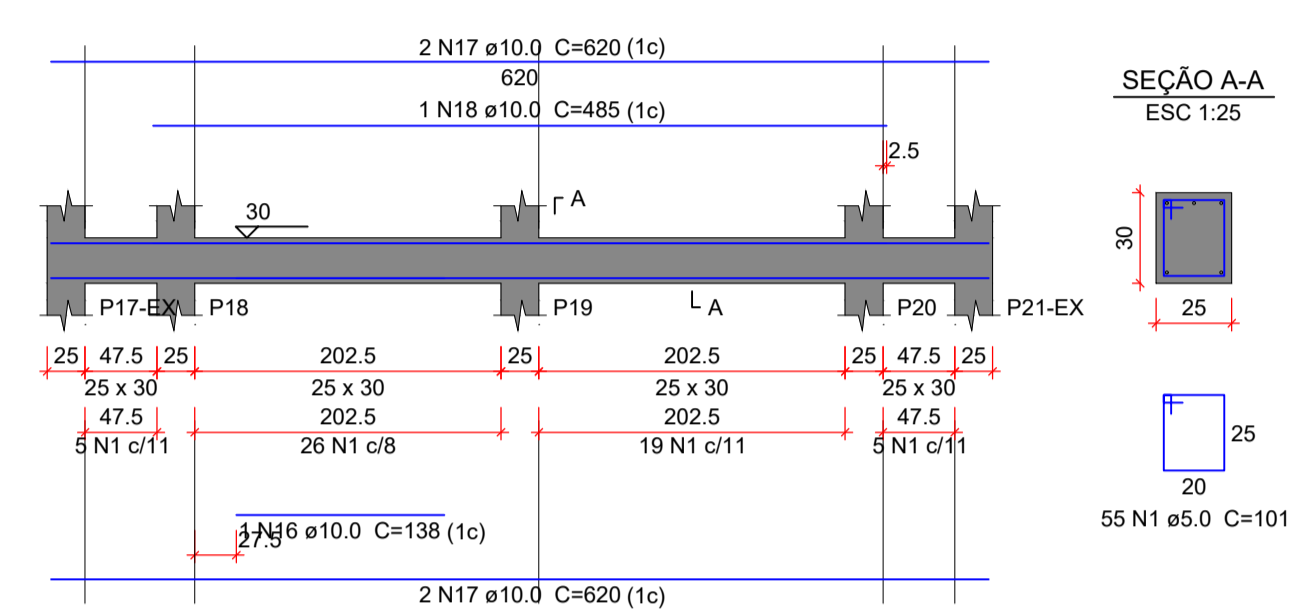
VB3
ESC 1:50



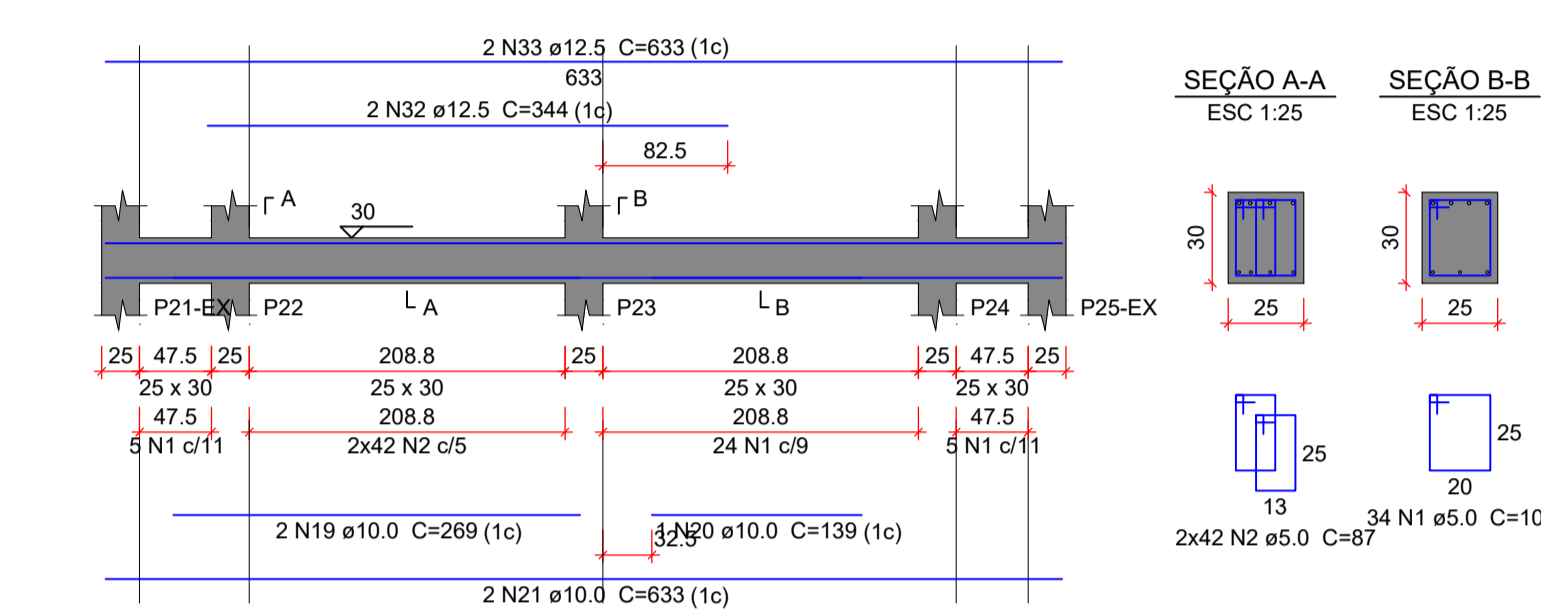
VB4
ESC 1:50



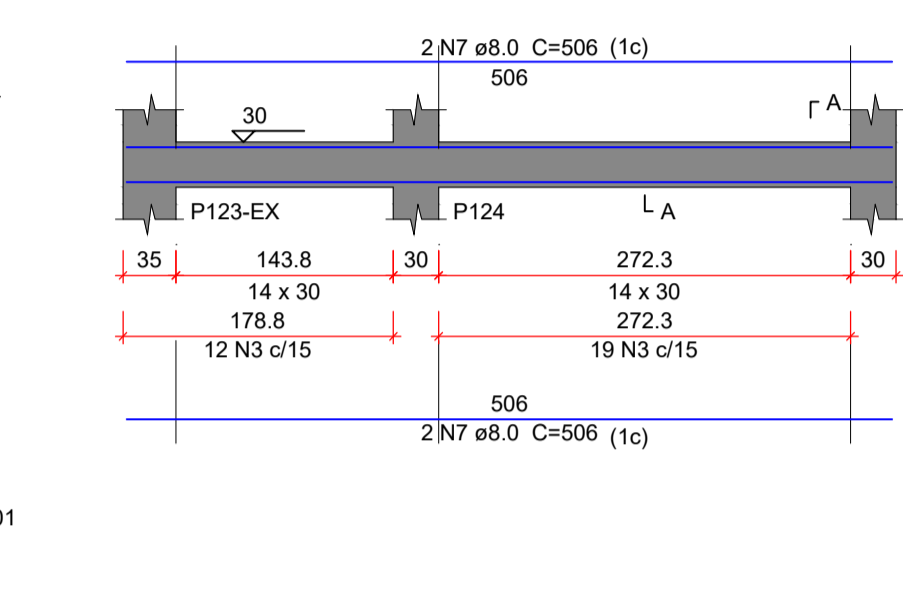
VB5
ESC 1:50



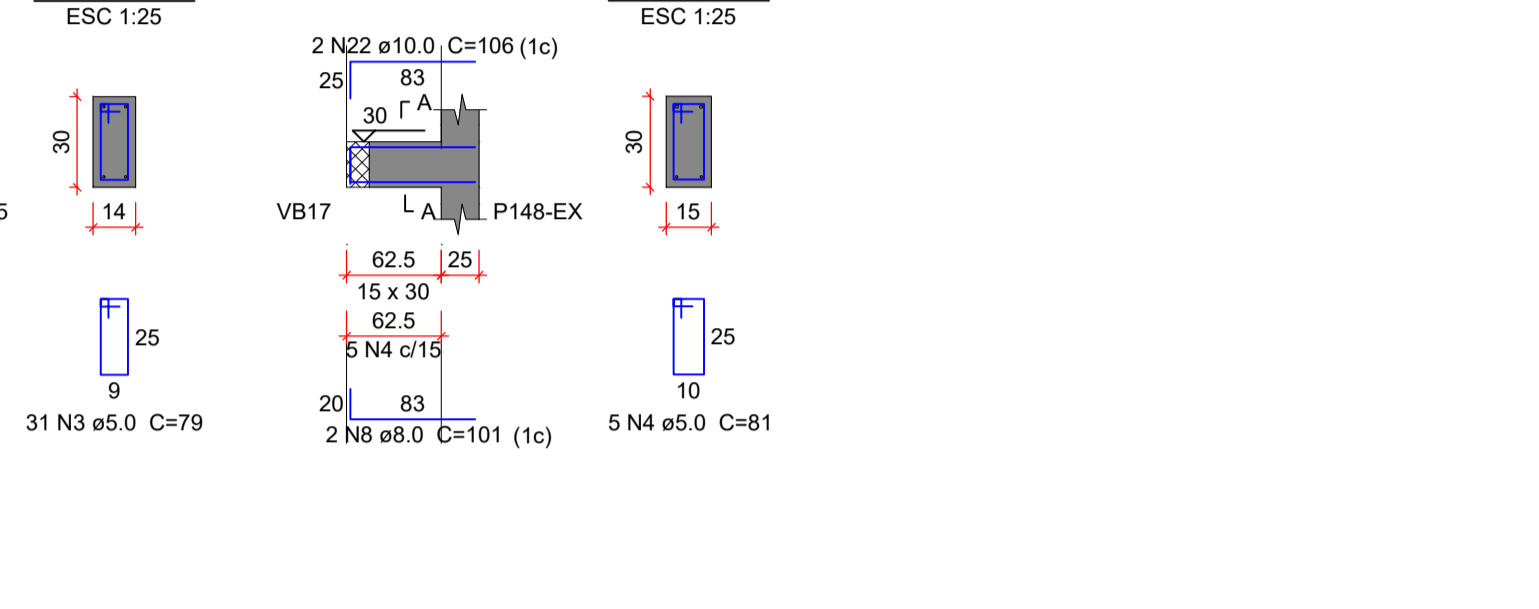
VB6
ESC 1:50



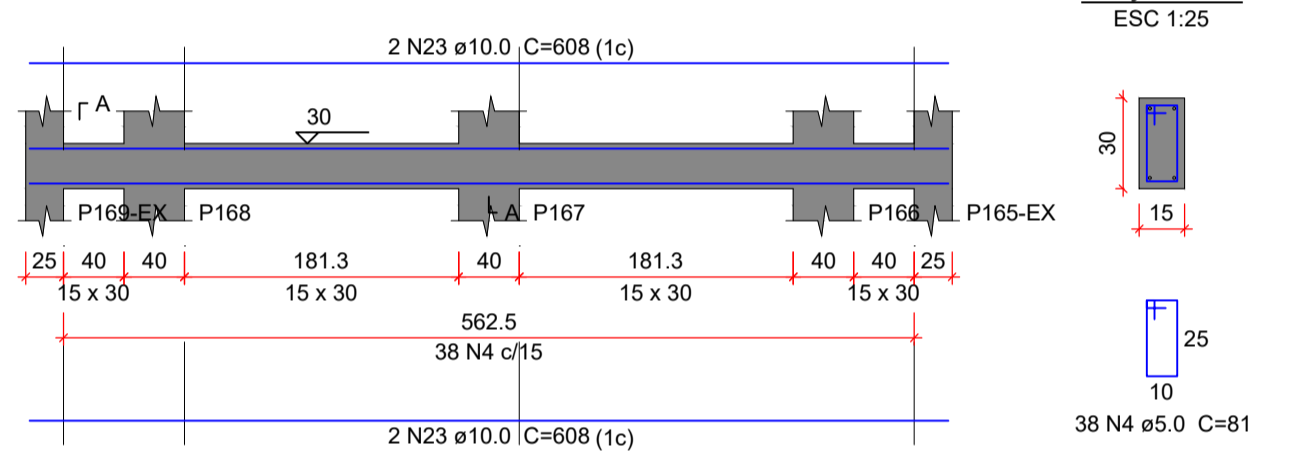
VB7
ESC 1:50



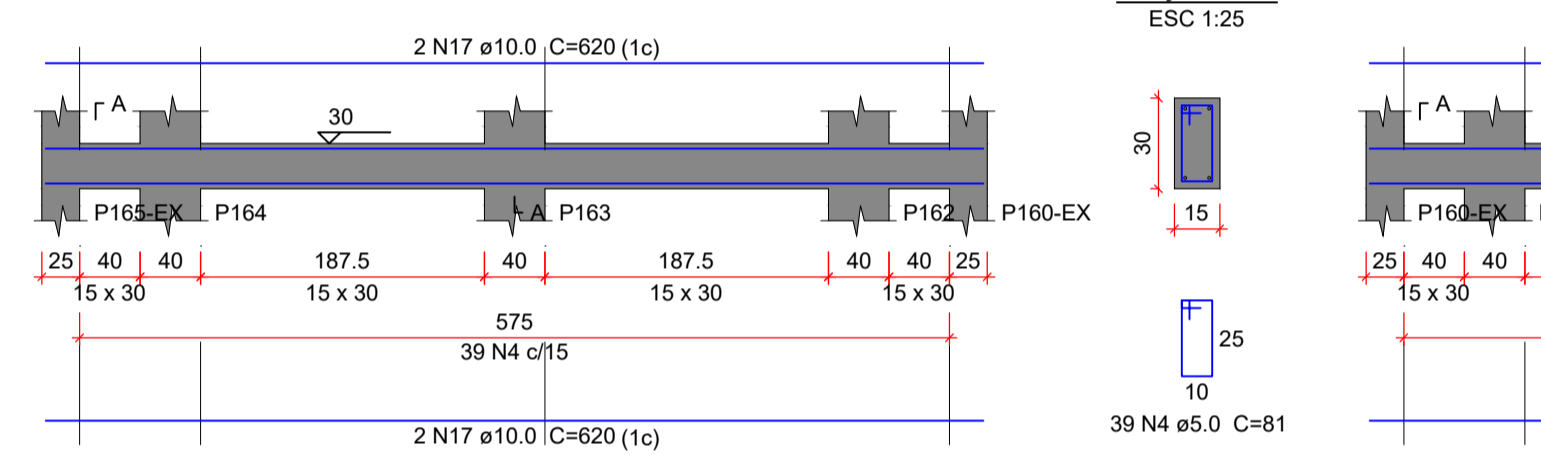
VB8
ESC 1:50



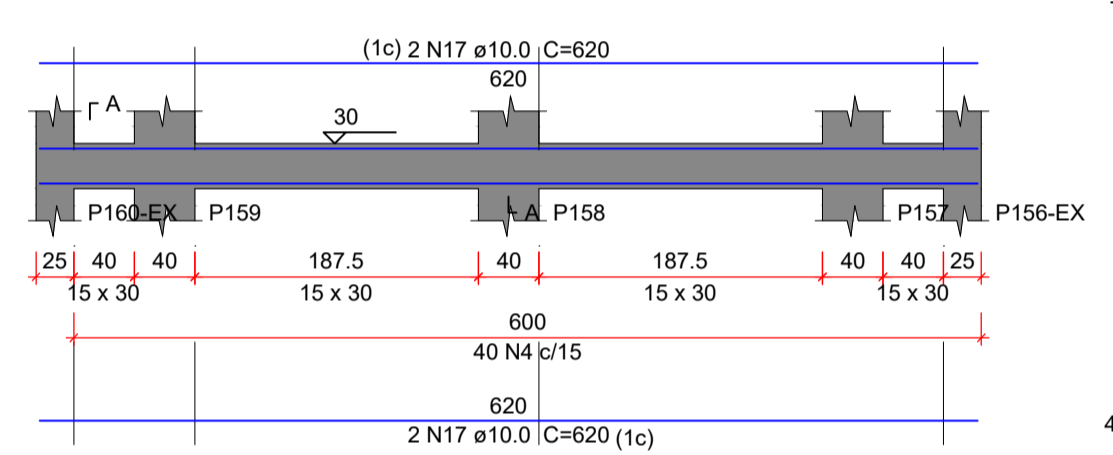
VB9
ESC 1:50



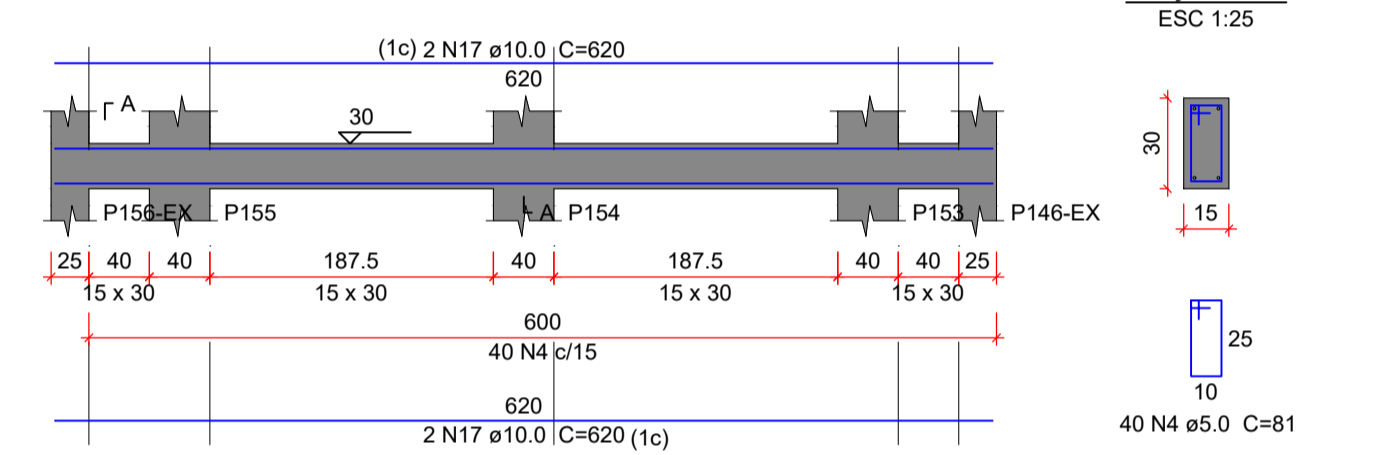
VB10
ESC 1:50



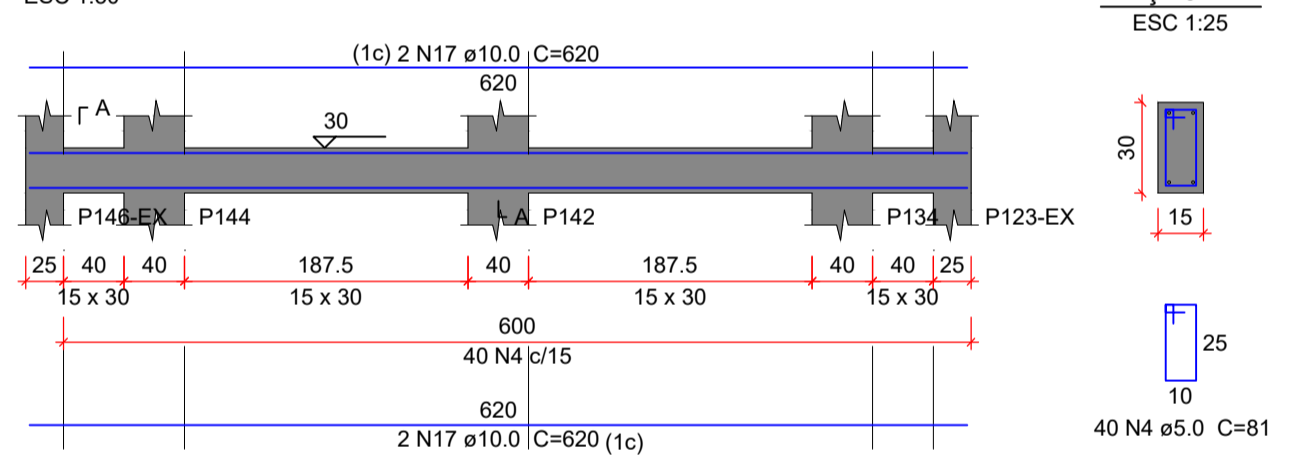
VB11
ESC 1:50



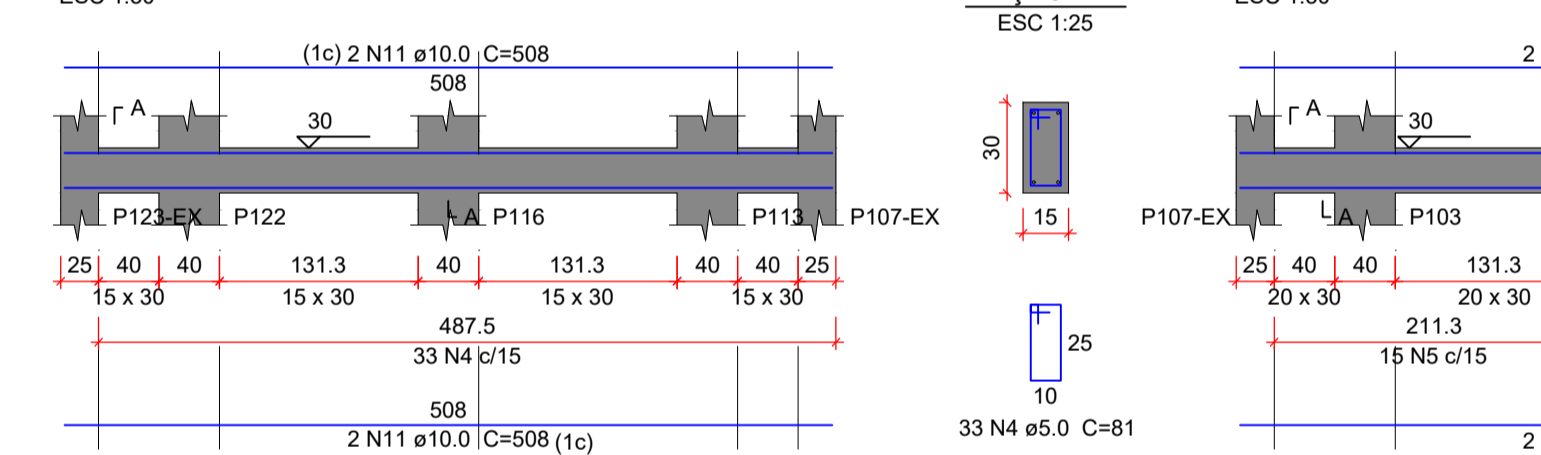
VB12
ESC 1:50



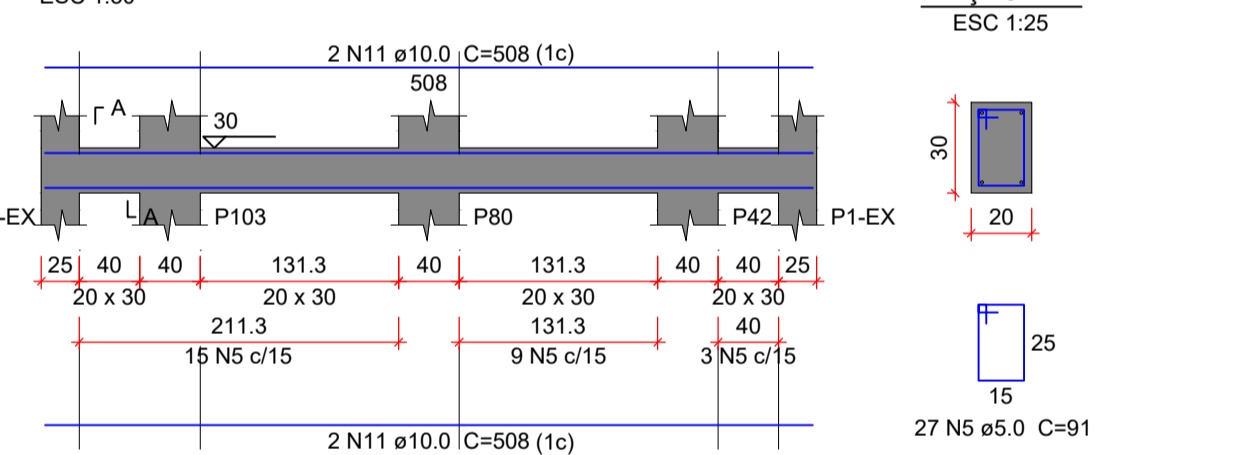
VB13
ESC 1:50



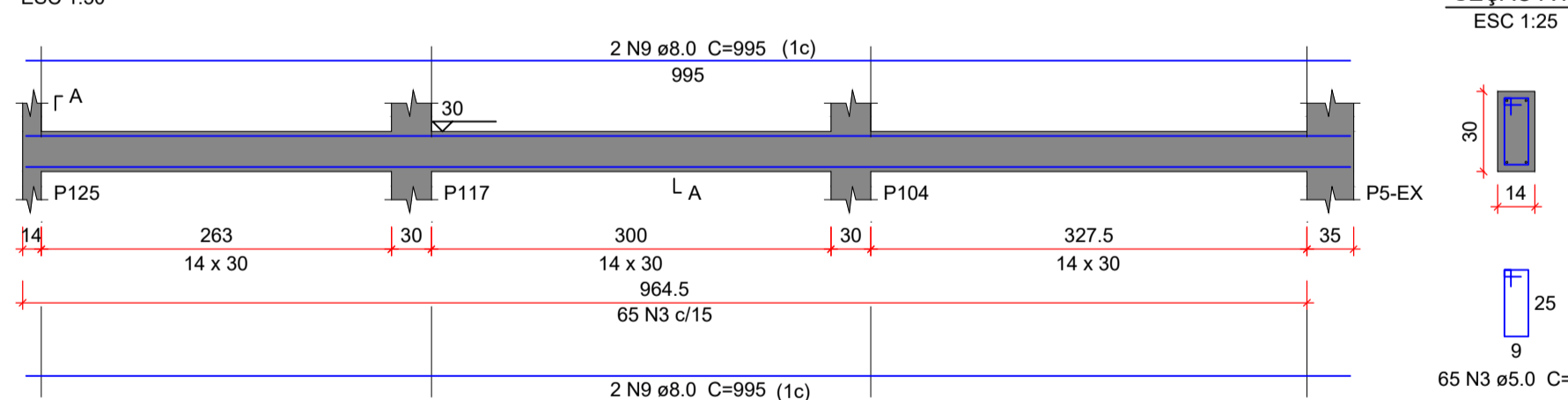
VB14
ESC 1:50



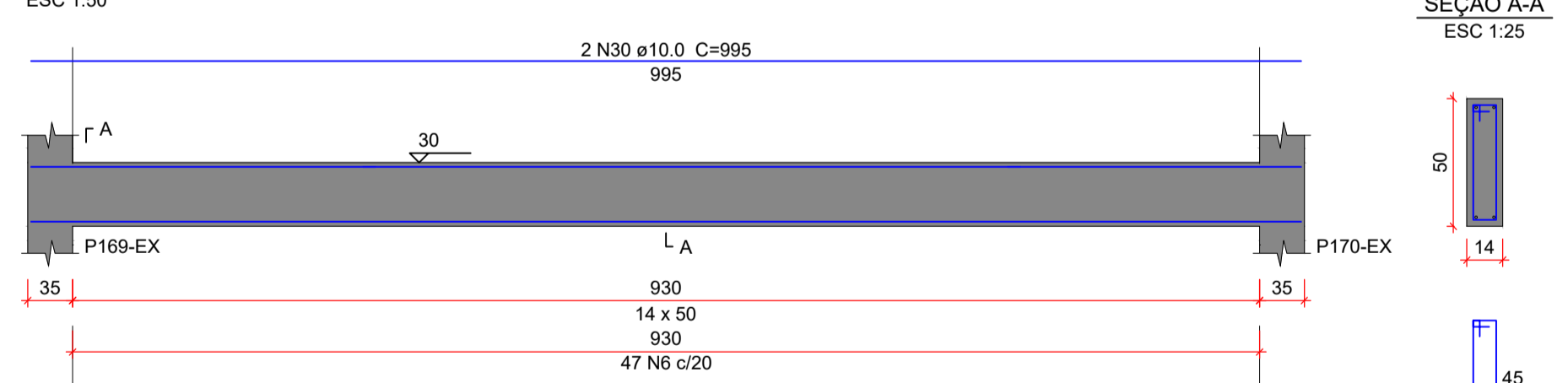
VB15
ESC 1:50



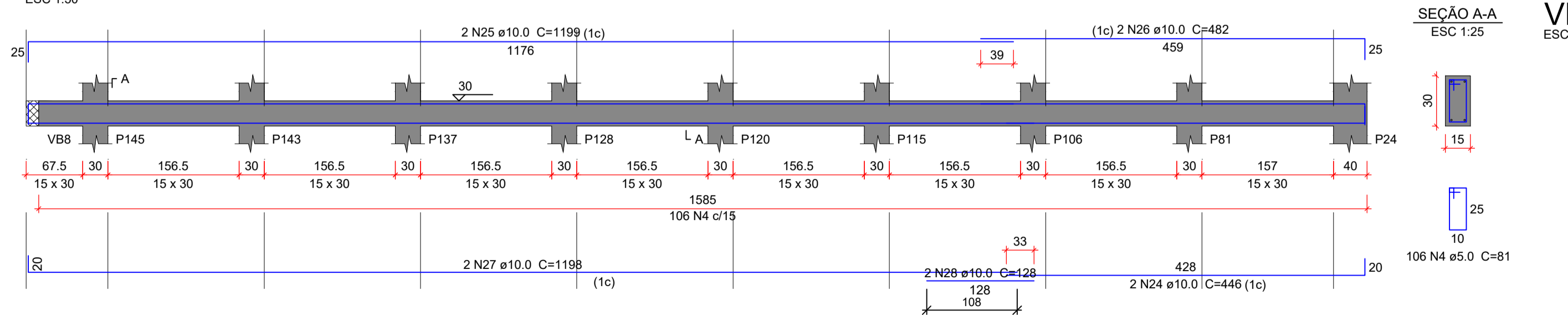
VB16
ESC 1:50



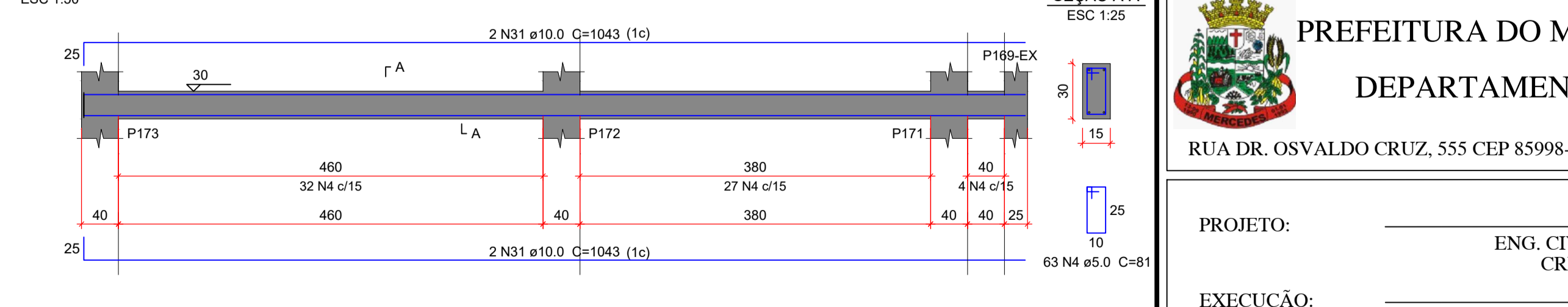
VB18
ESC 1:50



VB17
ESC 1:50



VB19
ESC 1:50



Relação do aço

VB1	VB2	VB3
VB4	VB5	VB6
VB7	VB8	VB9
VB10	VB11	VB12
VB13	VB14	VB15
VB16	VB17	VB18
VB19		

AÇO	N	DIAM (mm)	QUANT	CUNTA (cm)	C.TOTAL (cm)
CA50	1	8.0	250	101	2500
	2	5.0	84	87	7308
	3	5.0	96	79	7594
	4	5.0	404	81	32724
	5	5.0	27	91	2457
	6	5.0	47	119	5593
	7	6.3	116	88	10208
	8	8.0	4	596	2004
	9	8.0	4	956	3600
	10	8.0	4	440	1680
	11	10.0	1	129	129
	12	10.0	12	508	6096
	13	10.0	1	124	124
	14	10.0	1	116	116
	15	10.0	4	507	2028
	16	10.0	1	440	440
	17	10.0	1	138	138
	18	10.0	20	620	12400
	19	10.0	1	485	485
	20	10.0	2	269	538
	21	10.0	1	139	139
	22	10.0	2	633	1266
	23	10.0	2	156	312
	24	10.0	4	608	2432
	25	10.0	2	446	892
	26	10.0	2	1159	2318
	27	10.0	2	482	964
	28	10.0	2	1156	2312
	29	10.0	2	128	256
	30	10.0	4	985	3940
	31	10.0	4	1043	4172
	32	12.5	4	275	1100
	33	12.5	6	620	3720
	34	12.5	4	338	1352
	35	12.5	2	344	688
	36	12.5	2	633	1266

Resumo do aço

AÇO	DIAM (mm)	C.TOTAL (m)	PESO + 10% (kg)
CA50	6.3	102.1	27.5
VB10	8.0	62.1	26.9
	10.0	416.1	282.1
	12.5	93.7	39.2
CA60	5.0	809.2	137.2
PESO TOTAL (kg)			
CA50	435.8		
CA60	137.2		

Volume de concreto (C-25) = 5.41 m³
Área de forma = 72.98 m²

ORGÃOS PÚBLICOS

PROJETO ESTRUTURAL

TIPO DE EMPREENDIMENTO: PÚBLICO

DATA: JUN/2026

CONTEÚDO: ARMAÇÃO DAS VIGAS BALDRAMES

PRANCHA: 10/18

PREFEITURA DO MUNICÍPIO DE MERCEDES
DEPARTAMENTO DE ENGENHARIA

RUA DR. OSVALDO CRUZ, 555 CEP 85998-000 MERCEDES-PR FONE: (45) 3256-8045

PROJETO: ENG. CIVIL CRISTIAN COMIN
CREA: PR-2145677/D

EXECUÇÃO:

PROPRIETÁRIO: MUNICÍPIO DE MERCEDES
CNPJ: 95.719.373/0001-23

OBRA: FECHAMENTO DE BARRACÃO PRÉ-MOLDADO

LOCAL: AV. DR. MÁRIO TOTTA / LOTE Nº 18 / QUADRA Nº 03 / LOT. ZANCANELLA / MERCEDES - PR

PROPRIETÁRIO: MUNICÍPIO DE MERCEDES